

Cowper St between Admirals Rd and Colquitz Ave

October 28, 2019 To November 01, 2019



The data presented here is for information purposes only and should not be considered authoritative for construction, geotechnical, engineering, navigational, legal, or other site-specific uses. The information shared is owned by the Transportation Division of the Engineering Department at the District of Saanich. Accuracy is not guaranteed.

Start Date: 28-Oct-19
 Start Time: 0:12
 Station ID: C0017-02

Location 1: Cowper St between Admirals Rd and Colquitz Ave

Note:

DATE:	October 28, 2019		October 29, 2019		October 30, 2019		October 31, 2019		November 1, 2019		WK AVG		WK AVG	HOURLY
	MON		TUE		WED		THURS		FRI		EB	WB	CH 1+2	%
Time:	EB	WB	EB	WB	EB	WB	EB	WB	EB	WB	EB	WB		
12-1 AM			5	0	4	5	7	4			5	3	8	0.4%
1-2 AM			2	1	0	2	2	2			1	2	3	0.1%
2-3 AM			0	0	0	1	1	0			0	0	1	0.0%
3-4 AM			3	2	4	2	2	3			3	2	5	0.2%
4-5 AM			2	4	1	5	4	7			2	5	8	0.3%
5-6 AM			6	8	6	7	9	10			7	8	15	0.7%
6-7 AM			24	32	23	35	22	30			23	32	55	2.4%
7-8 AM			59	84	48	79	53	71			53	78	131	5.8%
8-9 AM			66	91	65	93	61	86			64	90	154	6.8%
9-10 AM			62	76	52	52	64	77			59	68	128	5.6%
10-11 AM			53	63	68	55	59	43			60	54	114	5.0%
11-12 PM			69	60	66	63	61	51			65	58	123	5.4%
12-1 PM			76	46	64	64	63	67			68	59	127	5.6%
1-2 PM			90	63	68	46	74	48			77	52	130	5.7%
2-3 PM			83	71	78	65	74	72			78	69	148	6.5%
3-4 PM			94	96	88	86	109	114			97	99	196	8.6%
4-5 PM			107	143	87	156	91	151			95	150	245	10.8%
5-6 PM			71	162	83	111	89	152			81	142	223	9.8%
6-7 PM			62	64	70	72	77	59			70	65	135	6.0%
7-8 PM			57	51	49	51	44	52			50	51	101	4.5%
8-9 PM			46	33	50	30	43	53			46	39	85	3.8%
9-10 PM			37	24	47	26	37	45			40	32	72	3.2%
10-11 PM			14	12	29	17	26	14			23	14	37	1.6%
11-12 AM			12	9	8	7	10	13			10	10	20	0.9%
LANES			1100	1195	1058	1130	1082	1224			1080	1183	2263	100.0%
TOTAL			2295		2188		2306				2270			
	MON		TUE		WED		THURS		FRI		WK AVG			

PEAK HOUR					TOTAL VEHICALS-PEAK PERIODS		2 HOUR PEAK INTERVALS					
MAX. 7 - 9 am PEAK HOUR	154	⇒	6.8%	between	8-9 AM	1003	⇒	6 HR TOTAL	2 HR AM (7 - 9 AM)			
MAX. 7 - 11 am PEAK HOUR	154	⇒	6.8%	between	8-9 AM	753	⇒	4 HR TOTAL	VEH / HR	VEH / 2HR	2 HR %	
MAX. 11 am - 1 pm PEAK HOUR	127	⇒	5.6%	between	12-1 PM				7-8 AM	131	285	12.6%
MAX. 11 am - 3 pm PEAK HOUR	148	⇒	6.5%	between	2-3 PM				8-9 AM	154		
MAX. 4 - 6 pm PEAK HOUR	245	⇒	10.8%	between	4-5 PM				2 HR NOON (11 - 1 PM)			
MAX. 3 - 6 pm PEAK HOUR	245	⇒	10.8%	between	4-5 PM				VEH / HR	VEH / 2HR	2 HR %	
									11-12 PM	123	250	11.0%
									12-1 PM	127		
									2 HR PM (4 - 6 PM)			
									VEH / HR	VEH / 2HR	2 HR %	
									4-5 PM	245	468	20.7%
									5-6 PM	223		

Cowper St between Admirals Rd and Colquitz Ave

Westbound

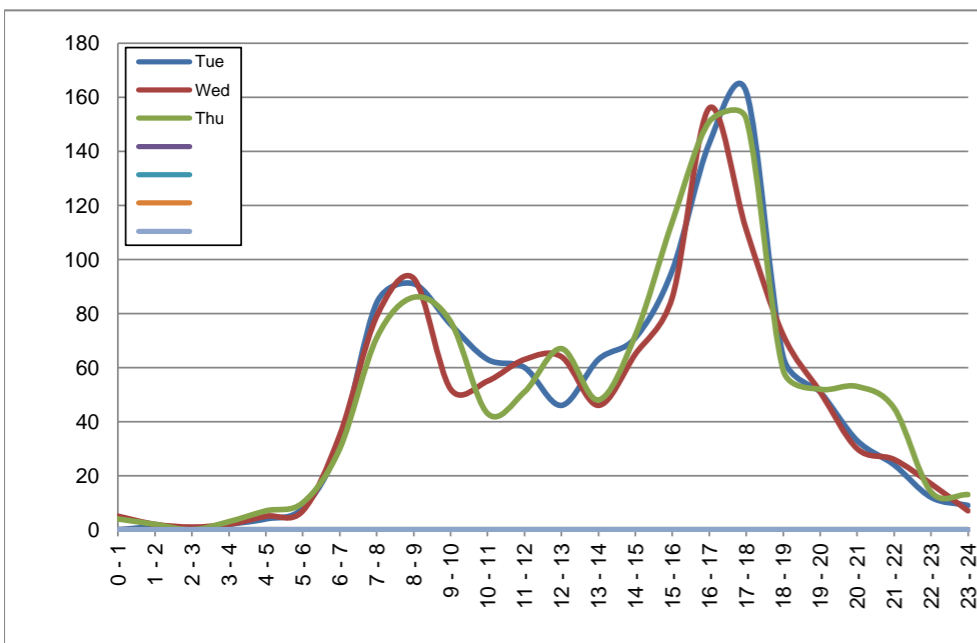
October 29, 2019 to October 31, 2019

Hourly Volumes

Time Period	Tue	Wed	Thu				
	Oct 29	Oct 30	Oct 31				
0 - 1	0	5	4				
1 - 2	1	2	2				
2 - 3	0	1	0				
3 - 4	2	2	3				
4 - 5	4	5	7				
5 - 6	8	7	10				
6 - 7	32	35	30				
7 - 8	84	79	71				
8 - 9	91	93	86				
9 - 10	76	52	77				
10 - 11	63	55	43				
11 - 12	60	63	51				
12 - 13	46	64	67				
13 - 14	63	46	48				
14 - 15	71	65	72				
15 - 16	96	86	114				
16 - 17	143	156	151				
17 - 18	162	111	152				
18 - 19	64	72	59				
19 - 20	51	51	52				
20 - 21	33	30	53				
21 - 22	24	26	45				
22 - 23	12	17	14				
23 - 24	9	7	13				
Day Total	1195	1130	1224				

15-Minute Volumes

Time Start	Tue	Wed	Thu				
	Oct 29	Oct 30	Oct 31				
0:00	0	2	1				
0:15	0	2	0				
0:30	0	1	3				
0:45	0	0	0				
1:00	0	1	1				
1:15	1	0	0				
1:30	0	0	1				
1:45	0	1	0				
2:00	0	0	0				
2:15	0	0	0				
2:30	0	0	0				
2:45	0	1	0				
3:00	0	0	0				
3:15	0	1	0				
3:30	1	1	2				
3:45	1	0	1				
4:00	2	2	0				
4:15	0	0	1				
4:30	0	1	2				
4:45	2	2	4				
5:00	0	0	0				
5:15	2	2	1				
5:30	2	2	1				
5:45	4	3	8				
6:00	2	4	2				
6:15	10	5	7				
6:30	13	16	13				
6:45	7	10	8				
7:00	22	11	17				
7:15	16	19	12				
7:30	24	22	19				
7:45	22	27	23				
8:00	25	22	20				
8:15	21	25	29				
8:30	26	27	15				
8:45	19	19	22				
9:00	21	13	22				
9:15	23	10	18				
9:30	11	21	17				
9:45	21	8	20				
10:00	15	12	16				
10:15	15	17	9				
10:30	18	12	7				
10:45	15	14	11				
11:00	11	15	15				
11:15	19	14	11				
11:30	13	20	16				
11:45	17	14	9				
12:00	8	21	20				
12:15	13	14	15				
12:30	16	14	11				
12:45	9	15	21				
13:00	18	13	10				
13:15	17	9	13				
13:30	16	14	17				
13:45	12	10	8				
14:00	19	25	19				
14:15	14	11	13				
14:30	25	12	15				
14:45	13	17	25				
15:00	20	8	20				
15:15	17	19	33				
15:30	28	29	28				
15:45	31	30	33				
16:00	36	36	44				
16:15	33	53	34				
16:30	37	31	35				
16:45	37	36	38				
17:00	59	38	36				
17:15	53	24	53				
17:30	35	29	34				
17:45	15	20	29				
18:00	12	24	19				
18:15	17	17	17				
18:30	20	20	9				
18:45	15	11	14				
19:00	11	18	10				
19:15	16	10	19				
19:30	14	15	8				
19:45	10	8	15				
20:00	11	4	14				
20:15	6	11	15				
20:30	7	12	12				
20:45	9	3	12				
21:00	8	8	14				
21:15	7	4	12				
21:30	7	8	13				
21:45	2	6	6				
22:00	4	4	11				
22:15	2	5	0				
22:30	3	5	1				
22:45	3	3	2				
23:00	3	4	5				
23:15	1	1	1				
23:30	2	1	2				
23:45	3	1	5				



Site notes:

Cowper St between Admirals Rd and Colquitz Ave

Eastbound

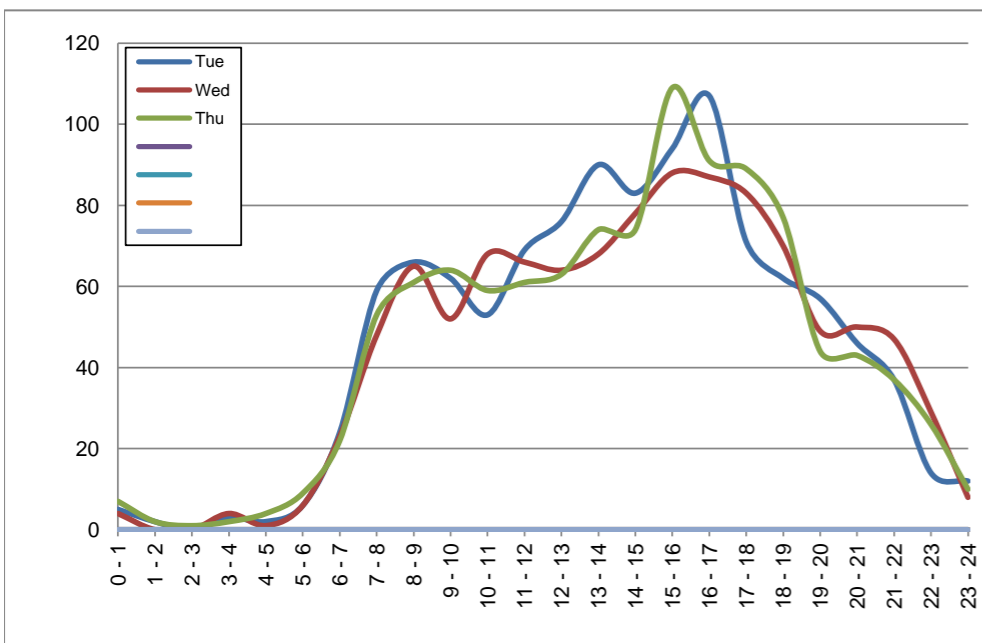
October 29, 2019 to October 31, 2019

Hourly Volumes

Time Period	Tue	Wed	Thu			
	Oct 29	Oct 30	Oct 31			
0 - 1	5	4	7			
1 - 2	2	0	2			
2 - 3	0	0	1			
3 - 4	3	4	2			
4 - 5	2	1	4			
5 - 6	6	6	9			
6 - 7	24	23	22			
7 - 8	59	48	53			
8 - 9	66	65	61			
9 - 10	62	52	64			
10 - 11	53	68	59			
11 - 12	69	66	61			
12 - 13	76	64	63			
13 - 14	90	68	74			
14 - 15	83	78	74			
15 - 16	94	88	109			
16 - 17	107	87	91			
17 - 18	71	83	89			
18 - 19	62	70	77			
19 - 20	57	49	44			
20 - 21	46	50	43			
21 - 22	37	47	37			
22 - 23	14	29	26			
23 - 24	12	8	10			
Day Total	1100	1058	1082			

15-Minute Volumes

Time Start	Tue	Wed	Thu				Time Start	Tue	Wed	Thu			
	Oct 29	Oct 30	Oct 31					Oct 29	Oct 30	Oct 31			
0:00	2	2	2				12:00	19	13	15			
0:15	2	2	3				12:15	16	21	17			
0:30	1	0	1				12:30	17	21	15			
0:45	0	0	1				12:45	24	9	16			
1:00	0	0	0				13:00	37	25	18			
1:15	0	0	1				13:15	18	14	18			
1:30	2	0	0				13:30	17	12	23			
1:45	0	0	1				13:45	18	17	15			
2:00	0	0	0				14:00	18	19	17			
2:15	0	0	1				14:15	25	18	15			
2:30	0	0	0				14:30	12	17	24			
2:45	0	0	0				14:45	28	24	18			
3:00	0	1	0				15:00	18	31	32			
3:15	1	2	1				15:15	24	15	23			
3:30	1	1	0				15:30	17	23	30			
3:45	1	0	1				15:45	35	19	24			
4:00	0	1	2				16:00	28	18	24			
4:15	0	0	1				16:15	36	17	28			
4:30	0	0	1				16:30	27	27	19			
4:45	2	0	0				16:45	16	25	20			
5:00	1	2	1				17:00	20	20	22			
5:15	0	2	3				17:15	18	22	28			
5:30	1	2	2				17:30	17	19	19			
5:45	4	0	3				17:45	16	22	20			
6:00	2	3	3				18:00	17	19	18			
6:15	2	2	3				18:15	14	15	24			
6:30	13	10	9				18:30	12	15	20			
6:45	7	8	7				18:45	19	21	15			
7:00	6	6	3				19:00	15	13	8			
7:15	11	14	19				19:15	22	16	13			
7:30	13	16	13				19:30	9	12	16			
7:45	29	12	18				19:45	11	8	7			
8:00	18	14	16				20:00	13	10	8			
8:15	14	16	15				20:15	11	14	9			
8:30	19	17	15				20:30	15	12	17			
8:45	15	18	15				20:45	7	14	9			
9:00	20	14	20				21:00	10	9	11			
9:15	13	12	17				21:15	8	16	8			
9:30	13	12	13				21:30	11	13	7			
9:45	16	14	14				21:45	8	9	11			
10:00	12	16	10				22:00	6	8	11			
10:15	16	18	15				22:15	1	12	4			
10:30	16	17	18				22:30	4	5	4			
10:45	9	17	16				22:45	3	4	7			
11:00	17	14	16				23:00	3	2	4			
11:15	16	14	13				23:15	1	2	2			
11:30	22	18	14				23:30	6	2	3			
11:45	14	20	18				23:45	2	2	1			



Site notes:

Vehicle Speed Summary

Saanich Engineering Department

Count Id: [C0017-02](#)

Filename: [Cowper St between Admirals Rd and Colquitz Ave-Oct-2019.xlsm](#)

Location: Cowper St between Admirals Rd and Colquitz Ave

Note:

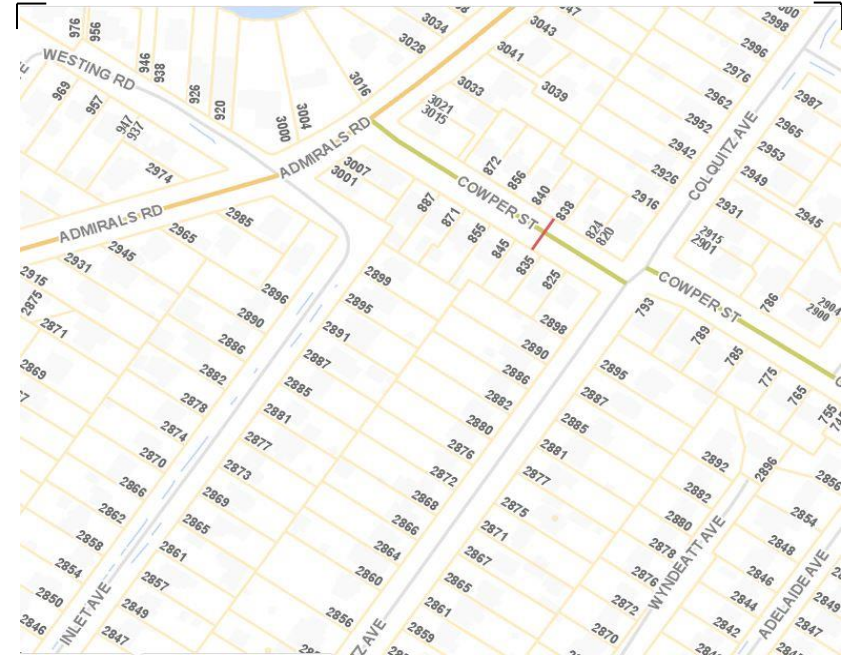
Direction: **East-West**

Dates: **October 28, 2019 To November 01, 2019**

Filtered data

AVG. SPEED	25 mph	39 km/h
50 % SPEED	25 mph	40 km/h
85 % SPEED	29 mph	46 km/h
95 % SPEED	31 mph	50 km/h

Location Map



Cowper St between Admirals Rd and Colquitz Ave

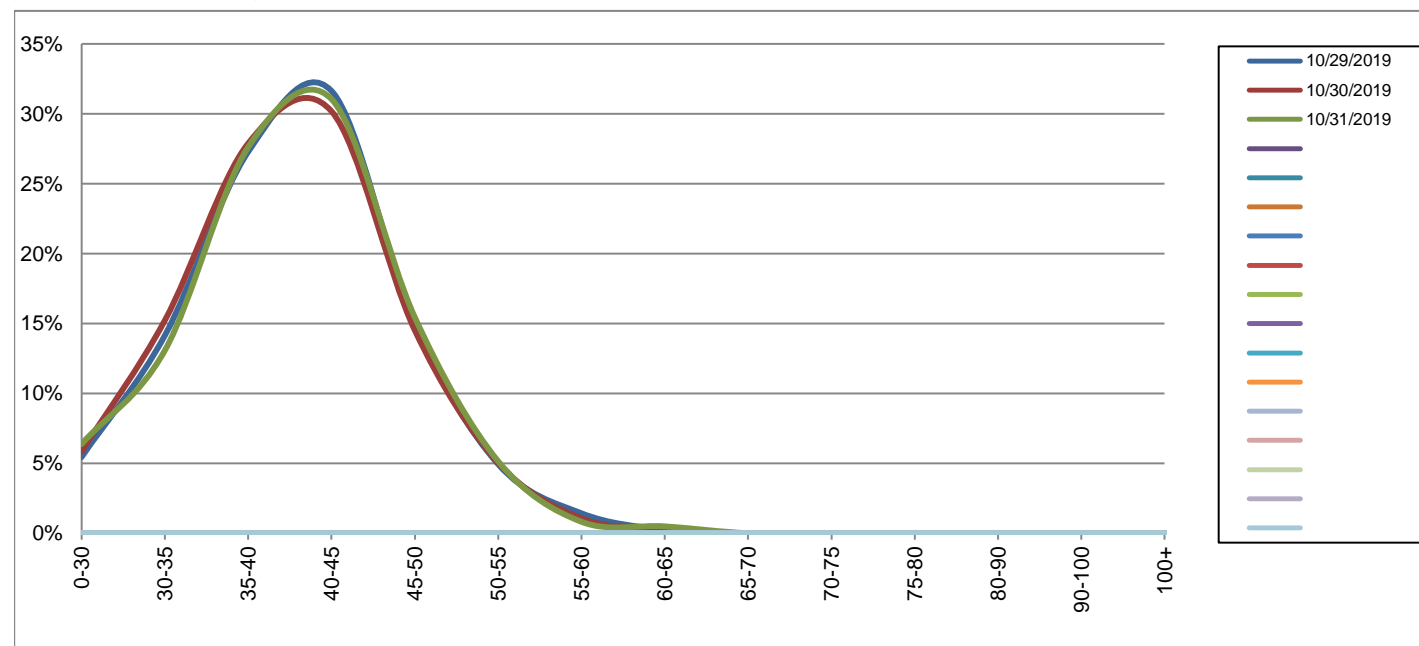
Westbound

October 29, 2019 to October 31, 2019

Daily Speed Bin Percentages															Daily Speed Bin Volumes														Total	Avg.
Bin #	1	2	3	4	5	6	7	8	9	10	11	12	13	14	1	2	3	4	5	6	7	8	9	10	11	12	13	14	Volume	Speed
Bin Speeds	0-30	30-35	35-40	40-45	45-50	50-55	55-60	60-65	65-70	70-75	75-80	80-90	90-100	100+	0-30	30-35	35-40	40-45	45-50	50-55	55-60	60-65	65-70	70-75	75-80	80-90	90-100	100+		
10/29/2019	5.4%	14.1%	27.3%	31.6%	14.9%	4.9%	1.4%	0.3%	0.0%	0.0%	0.0%	0.0%	0.0%	0.0%	65	169	326	378	178	59	17	3	0	0	0	0	0	0	1195	40
10/30/2019	5.8%	15.2%	27.9%	30.2%	14.5%	5.0%	1.1%	0.3%	0.0%	0.0%	0.0%	0.0%	0.0%	0.0%	66	172	315	341	164	57	12	3	0	0	0	0	0	0	1130	39
10/31/2019	6.4%	13.1%	27.6%	31.0%	15.4%	5.1%	0.8%	0.5%	0.0%	0.0%	0.0%	0.0%	0.0%	0.0%	78	160	338	380	189	63	10	6	0	0	0	0	0	0	1224	40
Total	5.9%	14.1%	27.6%	31.0%	15.0%	5.0%	1.1%	0.3%	0.0%	0.0%	0.0%	0.0%	0.0%	0.0%	209	501	979	1099	531	179	39	12	0	0	0	0	0	0	3549	40

Speed Data Summary

Bin #	1	2	3	4	5	6	7	8	9	10	11	12	13	14	Total
Bin Speeds	0-30	30-35	35-40	40-45	45-50	50-55	55-60	60-65	65-70	70-75	75-80	80-90	90-100	100+	
Survey Total	209	501	979	1099	531	179	39	12	0	0	0	0	0	0	3549
% Total	5.9%	14.1%	27.6%	31.0%	15.0%	5.0%	1.1%	0.3%	0.0%	0.0%	0.0%	0.0%	0.0%	0.0%	100%
Accumulated %	5.9%	20.0%	47.6%	78.6%	93.5%	98.6%	99.7%	100.0%	100.0%	100.0%	100.0%	100.0%	100.0%	100.0%	
Inverse Accum. %	94.1%	80.0%	52.4%	21.4%	6.5%	1.4%	0.3%	0.0%	0.0%	0.0%	0.0%	0.0%	0.0%	0.0%	
Average Speed	40 KM/H														



Site notes:

Cowper St between Admirals Rd and Colquitz Ave

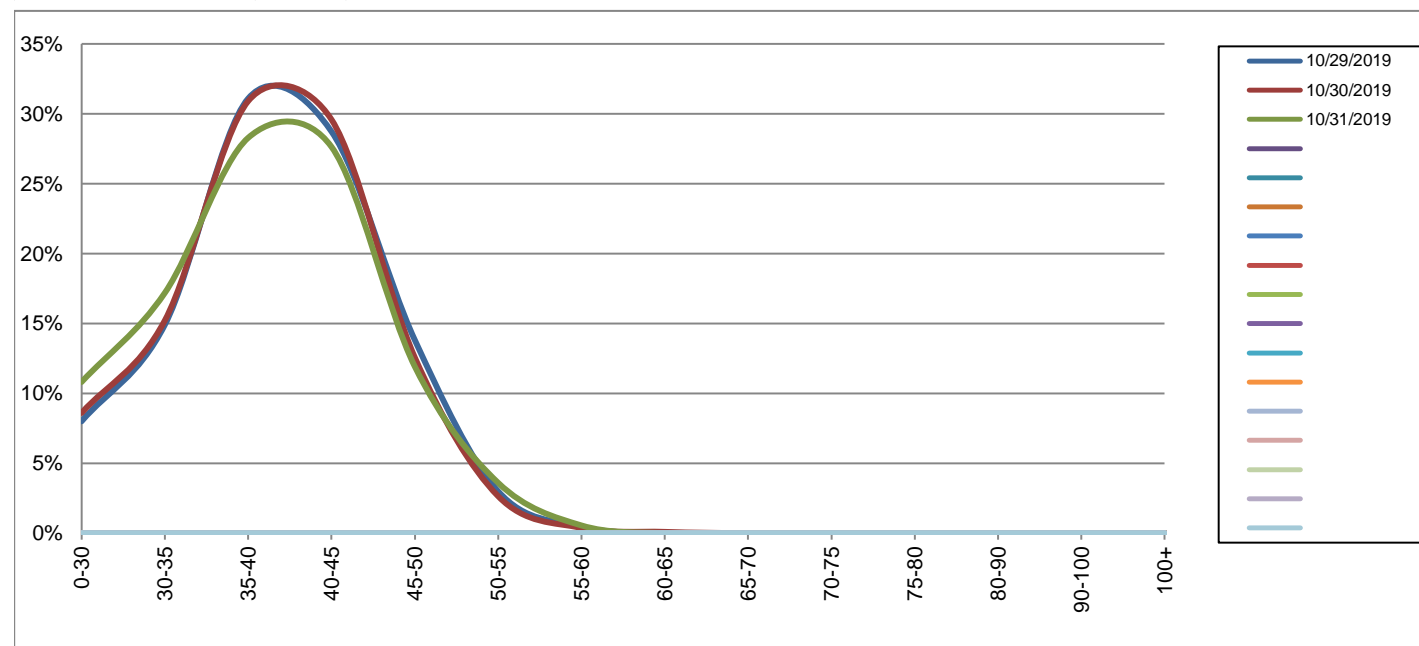
Eastbound

October 29, 2019 to October 31, 2019

Daily Speed Bin Percentages															Daily Speed Bin Volumes														Total	Avg.
Bin #	1	2	3	4	5	6	7	8	9	10	11	12	13	14	1	2	3	4	5	6	7	8	9	10	11	12	13	14	Volume	Speed
Bin Speeds	0-30	30-35	35-40	40-45	45-50	50-55	55-60	60-65	65-70	70-75	75-80	80-90	90-100	100+	0-30	30-35	35-40	40-45	45-50	50-55	55-60	60-65	65-70	70-75	75-80	80-90	90-100	100+		
10/29/2019	8.0%	14.9%	31.1%	28.7%	13.8%	3.0%	0.5%	0.0%	0.0%	0.0%	0.0%	0.0%	0.0%	0.0%	88	164	342	316	152	33	5	0	0	0	0	0	0	0	1100	38
10/30/2019	8.6%	15.2%	30.9%	29.6%	12.6%	2.6%	0.4%	0.1%	0.0%	0.0%	0.0%	0.0%	0.0%	0.0%	91	161	327	313	133	28	4	1	0	0	0	0	0	0	1058	38
10/31/2019	10.8%	17.2%	28.3%	27.6%	11.9%	3.6%	0.6%	0.0%	0.0%	0.0%	0.0%	0.0%	0.0%	0.0%	117	186	306	299	129	39	6	0	0	0	0	0	0	0	1082	37
Total	9.1%	15.8%	30.1%	28.6%	12.8%	3.1%	0.5%	0.0%	0.0%	0.0%	0.0%	0.0%	0.0%	0.0%	296	511	975	928	414	100	15	1	0	0	0	0	0	0	3240	38

Speed Data Summary

Bin #	1	2	3	4	5	6	7	8	9	10	11	12	13	14	Total
Bin Speeds	0-30	30-35	35-40	40-45	45-50	50-55	55-60	60-65	65-70	70-75	75-80	80-90	90-100	100+	
Survey Total	296	511	975	928	414	100	15	1	0	0	0	0	0	0	3240
% Total	9.1%	15.8%	30.1%	28.6%	12.8%	3.1%	0.5%	0.0%	0.0%	0.0%	0.0%	0.0%	0.0%	0.0%	100%
Accumulated %	9.1%	24.9%	55.0%	83.6%	96.4%	99.5%	100.0%	100.0%	100.0%	100.0%	100.0%	100.0%	100.0%	100.0%	
Inverse Accum. %	90.9%	75.1%	45.0%	16.4%	3.6%	0.5%	0.0%	0.0%	0.0%	0.0%	0.0%	0.0%	0.0%	0.0%	
Average Speed	38 KM/H														



Site notes:

Cowper St between Admirals Rd and Colquitz Ave

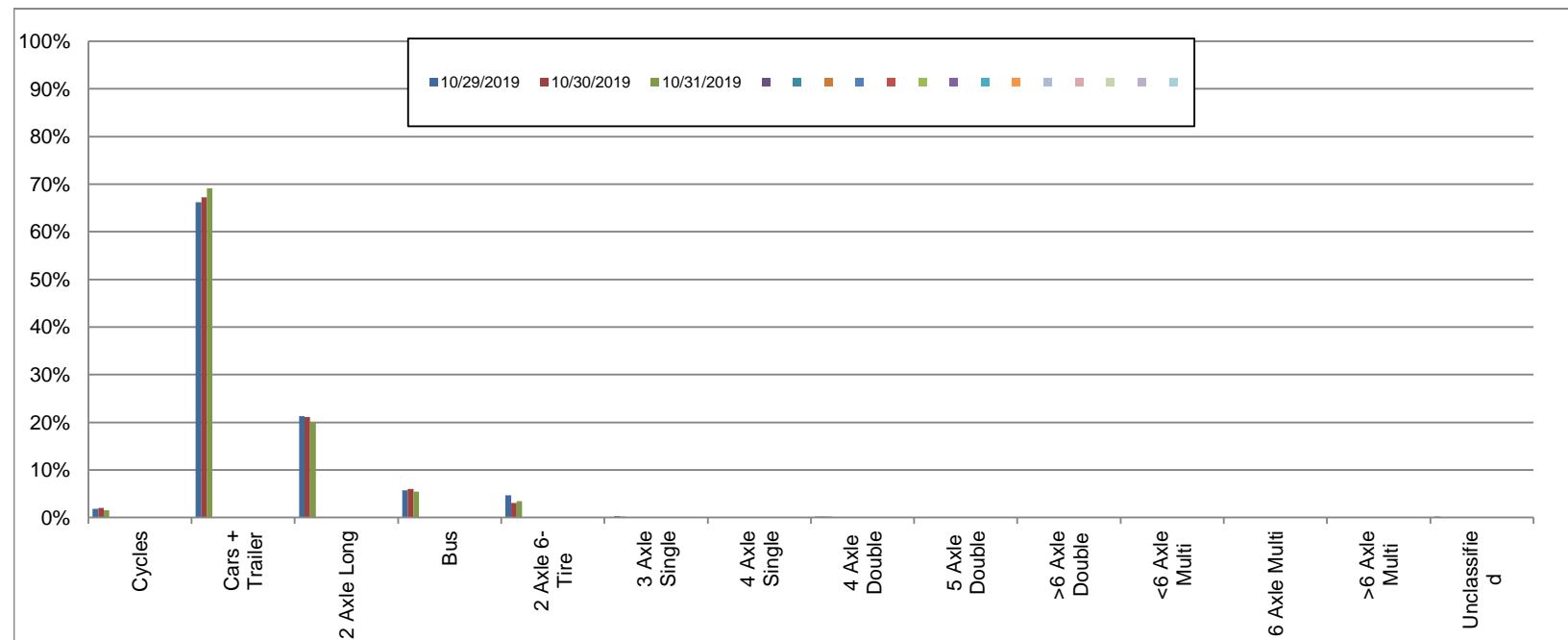
Westbound

October 29, 2019 to October 31, 2019

Daily Class Bin Percentages															Daily Class Bin Volumes															
Bin #	1	2	3	4	5	6	7	8	9	10	11	12	13	14	1	2	3	4	5	6	7	8	9	10	11	12	13	14	Total Volume	
Bin Class	Cycles	Cars + Trailer	2 Axle Long	Bus	2 Axle 6-Tire	3 Axle Single	4 Axle Single	4 Axle Double	5 Axle Double	>6 Axle Double	<6 Axle Multi	6 Axle Multi	>6 Axle Multi	Unclassified	Cycles	Cars + Trailer	2 Axle Long	Bus	2 Axle 6-Tire	3 Axle Single	4 Axle Single	4 Axle Double	5 Axle Double	>6 Axle Double	<6 Axle Multi	6 Axle Multi	>6 Axle Multi	Unclassified		
10/29/2019	1.8%	66.2%	21.3%	5.7%	4.7%	0.0%	0.0%	0.2%	0.0%	0.0%	0.0%	0.0%	0.0%	0.2%	22	791	254	68	56	0	0	2	0	0	0	0	0	0	2	1195
10/30/2019	2.0%	67.3%	21.1%	6.0%	3.1%	0.3%	0.0%	0.2%	0.0%	0.0%	0.0%	0.0%	0.0%	0.1%	23	760	238	68	35	3	0	2	0	0	0	0	0	0	1	1130
10/31/2019	1.6%	69.1%	20.0%	5.5%	3.4%	0.2%	0.0%	0.2%	0.0%	0.0%	0.0%	0.0%	0.0%	0.0%	19	846	245	67	42	3	0	2	0	0	0	0	0	0	0	1224
Total	1.8%	67.5%	20.8%	5.7%	3.7%	0.2%	0.0%	0.2%	0.0%	0.0%	0.0%	0.0%	0.0%	0.1%	64	2397	737	203	133	6	0	6	0	0	0	0	0	3	3549	

Class Data Summary

Bin #	1	2	3	4	5	6	7	8	9	10	11	12	13	14	Total Volume
Bin Class	Cycles	Cars + Trailer	2 Axle Long	Bus	2 Axle 6-Tire	3 Axle Single	4 Axle Single	4 Axle Double	5 Axle Double	>6 Axle Double	<6 Axle Multi	6 Axle Multi	>6 Axle Multi	Unclassified	Total Volume
Survey Total	64	2397	737	203	133	6	0	6	0	0	0	0	0	3	3549
% Total	1.8%	67.5%	20.8%	5.7%	3.7%	0.2%	0.0%	0.2%	0.0%	0.0%	0.0%	0.0%	0.0%	0.1%	100%
Accumulated %	1.8%	69.3%	90.1%	95.8%	99.6%	99.7%	99.7%	99.9%	99.9%	99.9%	99.9%	99.9%	99.9%	100.0%	
Inv. Accum. %	98.2%	30.7%	9.9%	4.2%	0.4%	0.3%	0.3%	0.1%	0.1%	0.1%	0.1%	0.1%	0.1%	0.0%	



Classification Descriptions

Bin #	Bin Description
1	Motorcycles
2	Passenger cars, including those with recreational trailers
3	2-axle pick-ups, vans, and RVs, including those with recreational trailers
4	Buses
5	2-axle, 6-tire single units
6	3-axle single units
7	4-axle single units
8	3-axle or 4-axle double unit
9	5-axle double unit
10	6-, 7-, or 8-axle double unit
11	5-axle multiple unit
12	6-axle multiple unit
13	7-or-more-axle multiple unit
14	Vehicles that could not be classified

Site notes:

Cowper St between Admirals Rd and Colquitz Ave

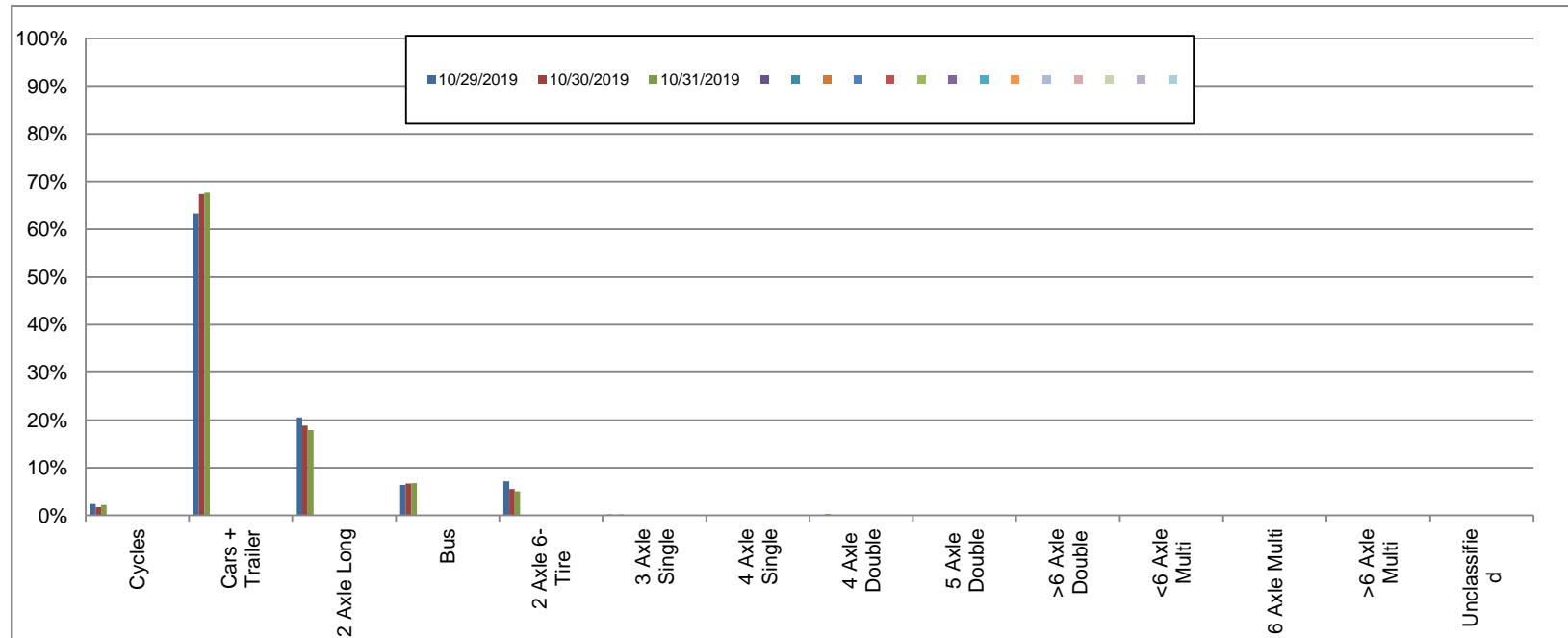
Eastbound

October 29, 2019 to October 31, 2019

Daily Class Bin Percentages															Daily Class Bin Volumes															
Bin #	1	2	3	4	5	6	7	8	9	10	11	12	13	14	1	2	3	4	5	6	7	8	9	10	11	12	13	14	Total Volume	
Bin Class	Cycles	Cars + Trailer	2 Axle Long	Bus	2 Axle 6-Tire	3 Axle Single	4 Axle Single	4 Axle Double	5 Axle Double	>6 Axle Double	<6 Axle Multi	6 Axle Multi	>6 Axle Multi	Unclassified	Cycles	Cars + Trailer	2 Axle Long	Bus	2 Axle 6-Tire	3 Axle Single	4 Axle Single	4 Axle Double	5 Axle Double	>6 Axle Double	<6 Axle Multi	6 Axle Multi	>6 Axle Multi	Unclassified		
10/29/2019	2.4%	63.4%	20.5%	6.4%	7.1%	0.2%	0.0%	0.1%	0.0%	0.0%	0.0%	0.0%	0.0%	0.0%	26	697	226	70	78	2	0	1	0	0	0	0	0	0	1100	
10/30/2019	1.7%	67.3%	18.8%	6.6%	5.5%	0.0%	0.0%	0.0%	0.0%	0.0%	0.0%	0.0%	0.0%	0.1%	18	712	199	70	58	0	0	0	0	0	0	0	0	0	1	1058
10/31/2019	2.2%	67.7%	17.8%	6.7%	5.1%	0.2%	0.0%	0.3%	0.0%	0.0%	0.0%	0.0%	0.0%	0.0%	24	732	193	73	55	2	0	3	0	0	0	0	0	0	1082	
Total	2.1%	66.1%	19.1%	6.6%	5.9%	0.1%	0.0%	0.1%	0.0%	0.0%	0.0%	0.0%	0.0%	0.0%	68	2141	618	213	191	4	0	4	0	0	0	0	0	1	3240	

Class Data Summary

Bin #	1	2	3	4	5	6	7	8	9	10	11	12	13	14	Total Volume
Bin Class	Cycles	Cars + Trailer	2 Axle Long	Bus	2 Axle 6-Tire	3 Axle Single	4 Axle Single	4 Axle Double	5 Axle Double	>6 Axle Double	<6 Axle Multi	6 Axle Multi	>6 Axle Multi	Unclassified	Total Volume
Survey Total	68	2141	618	213	191	4	0	4	0	0	0	0	0	1	3240
% Total	2.1%	66.1%	19.1%	6.6%	5.9%	0.1%	0.0%	0.1%	0.0%	0.0%	0.0%	0.0%	0.0%	0.0%	100%
Accumulated %	2.1%	68.2%	87.3%	93.8%	99.7%	99.8%	99.8%	100.0%	100.0%	100.0%	100.0%	100.0%	100.0%	100.0%	
Inv. Accum. %	97.9%	31.8%	12.7%	6.2%	0.3%	0.2%	0.2%	0.0%	0.0%	0.0%	0.0%	0.0%	0.0%	0.0%	



Classification Descriptions

Bin #	Bin Description
1	Motorcycles
2	Passenger cars, including those with recreational trailers
3	2-axle pick-ups, vans, and RVs, including those with recreational trailers
4	Buses
5	2-axle, 6-tire single units
6	3-axle single units
7	4-axle single units
8	3-axle or 4-axle double unit
9	5-axle double unit
10	6-, 7-, or 8-axle double unit
11	5-axle multiple unit
12	6-axle multiple unit
13	7-or-more-axle multiple unit
14	Vehicles that could not be classified

Site notes: